

Adjustable Base Vanguard Wired



Owner Manual *Vanguard*



CONTENTS

Advisory

Setup and Installation

Wired Hand Control

1-2-20 year Warranty

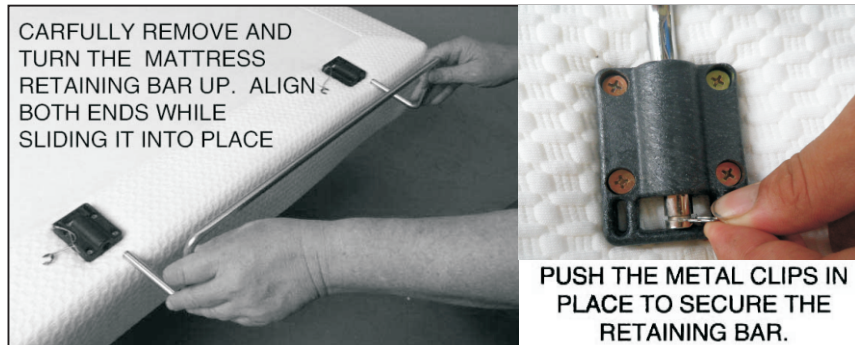
Manufactured by Innova Sleep Systems

Step 6:

With the help of your able-bodied assistant, carefully lift the adjustable bed base frame and set it in place upright on its legs. **Do not set base on its side with angle pressure on the legs.** Excessive pressure may damage the legs. Remove all protective plastic covering. Note: check and make sure that all power cords clear and do not interfere with any Adjustable Bed base Mechanisms; Dispose of plastic covering properly to avoid injury.

Step 7:

Note : The Mattress Retaining Bar is mounted upside down for shipping only. Remove the Mattress Retaining Bar on the foot of the bed base and turn the bar upright and reinstall by carefully aligning and pushing the bar into place. Insert the retaining clips to secure the bar into place. (See Figures 3 & 4.)



Vz x ^ ..v11D

Vz x ^ ..v11E

Setup is now complete. Plug it in and enjoy.

USING SAME REMOTE:

The bed base is designed to allow two twin XLong bases to become an Eastern King base and two Split-Cal King bases to become a Cal King base. Owner can use the same remote, to control two side by side beds bases by connecting the two control boxes with the SYNCHRONIZE CORD.

Unplug the remotes from the two control boxes then plug the synchronize cord ends into the same outlets which were just unplugged. Connect one remote cable into the female end of the synchronize cord and enjoy both bases operated by one remote. (See figure 5&6)

Setup is now complete. Plug it in and enjoy.

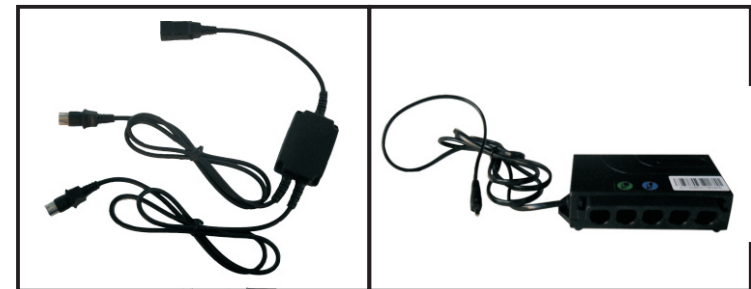


Figure 5

Figure 6